

## 8" inch Embedded Touch Monitor

### Products application :

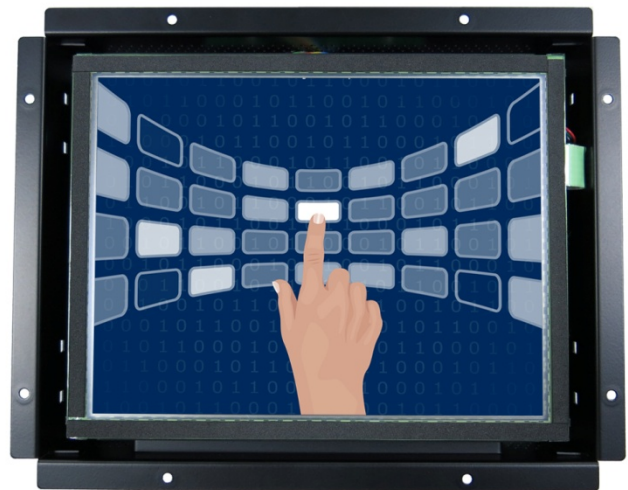
- POS Terminal
- Industrial PC
- Kiosk
- Gaming
- Medical apparatus
- Personal computer
- Mobile GPS
- Office automation
- Security system of the house
- Car-mounted amusement
- Military equipment
- Communicate



## 8" inch Embedded Touch Monitor

### Display Specifications :

|                       |                                       |
|-----------------------|---------------------------------------|
| Active Area           | 162 × 121 mm                          |
| Pixel Pitch           | 0.05275(W) × 0.15825(H)mm             |
| Brightness            | 300 cd/m <sup>2</sup>                 |
| Contrast Ratio        | 700 : 1                               |
| Resolution            | 1024 x 768 ( XGA )                    |
| Viewing Angle         | L/R 150° ; U/D150°                    |
| Response Time         | 10 ms ( Tr + Tf )                     |
| Display Colors        | 262K                                  |
| Display Modes         | 640×480 ; 800×600 ; 1024×768          |
| Signal input          | VGA ; Audio                           |
| Audio                 | 1W ( 8Ω ) ×1                          |
| OSD Keyboard          | ⊙Menu/Select ⊖ ⊕ ⊙Auto/Exit ⊙Power    |
| Power Source          | DC 12V ; ≤7w ; Standby ≤1w            |
| Power Consumption     |                                       |
| Storage · Operation   | -20~60°C ; -10~50°C                   |
| VESA                  | 75×75 mm                              |
| Casing Colors         | Black                                 |
| Casing Size · Weight  | 227× 180 × 35 mm ; 1.15 kg ( W×H×D )  |
| Carton · gross weight | 315 × 150 × 295 mm ; 2.29kg ( W×H×D ) |



### Touch Feature :

|                  |   |
|------------------|---|
| Input Method     | Finger, gloved hand, or stylus activation |
| Activation Force | ≥ 50g                                     |
| Linearity        | ≤ 1.5%                                    |
| Surface          | ≥ 3H                                      |
| Life Time        | ≥ 35,000,000                              |
| Application      | Writing and Signature Capture Capability  |
| PC Link          | USB or RS232                              |

### Software Feature :

|                  |   |
|------------------|---|
| Calibration      | Fast full oriental 4 points position  |
| Compensation     | Edge compensation. Accuracy 25 points linearity compensation  |
| Draw Test        | Position and linearity verification   |
| Controller       | Support multiple controllers  |
| Languages        | English · Simple Chinese · Traditional Chinese · Japanese · French · German · Spanish · Korean · Arabic · Czech · Danish · Dutch · Greek · Hungarian · Italian · Norwegian · Russian · Polish · Portuguese · Slovenian · Swedish · Thai · Turkish |
| Mouse Emulator   | Right / left button emulation. Auto Right / left Click ( PDA function )   |
| Touch Style      | Drawing a Mode · button a Mode · Touch Off/ on Switch   |
| Double Click     | Configurable double click speed · Configurable double click area  |
| Sound Modes      | No sound · Touch down · Touch up  |
| COM Port Support | COM1 ~ COM255 for Windows and Linux<br>COM1 ~ COM8 for MS- DOS  |
| Display Support  | display rotation · Support multiple monitors  |
| Support O.S      | All Windows-32 bit O.S<br>Windows7-8-10 ; XP-64 bit O.S<br>MS-DOS ; A II Linux ; MAC  |

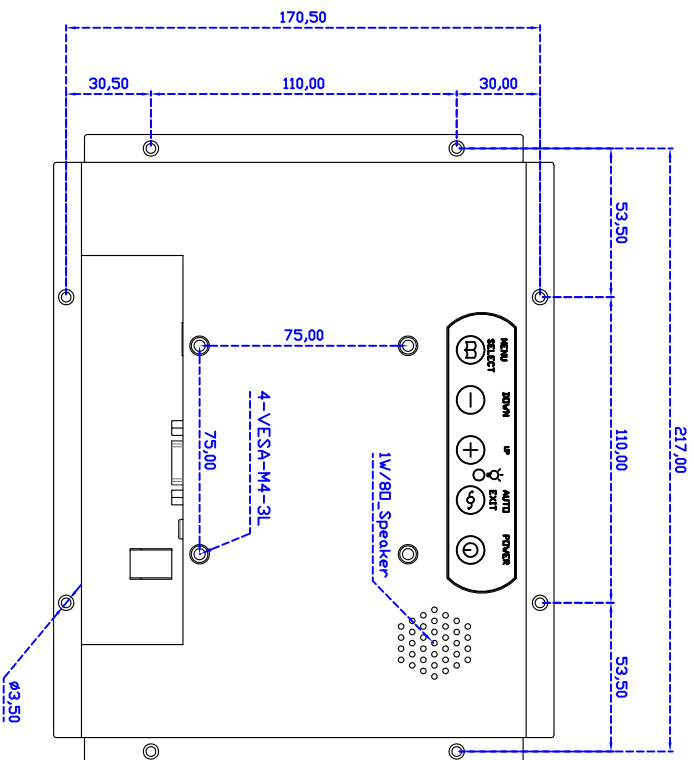
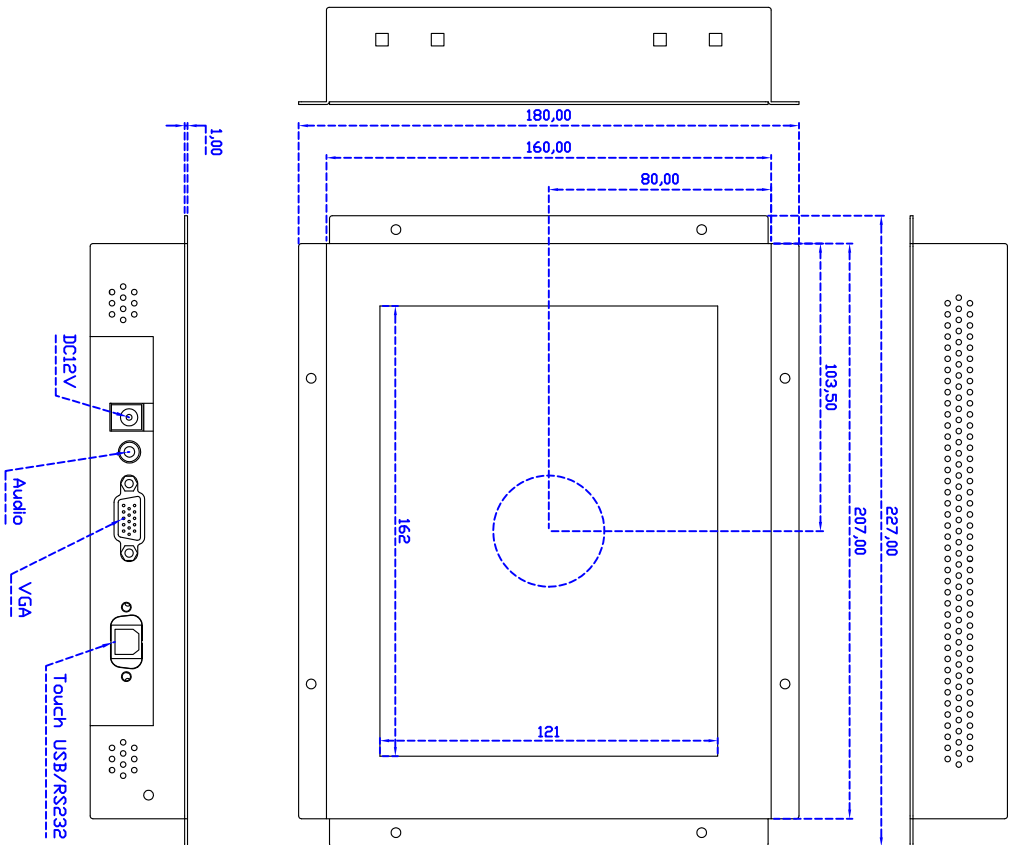
### Order information :

|                     |   |                     |                         |
|---------------------|---|---------------------|-------------------------|
| AIM-TMOP5R080-R21 : | 【VGA/AUDIO/USB-TOUCH】   | AIM-TMOP5R080-R22 : | 【VGA/AUDIO/RS232-TOUCH】 |
| Accessory           | VGA Cable/AC90~260V Adapter/Power Cable/USB or RS232 Cable/Audio Cable/Touch Pen/Cleaning wipes/Driver Disk |                     |                         |



**3 Year Warranty**  
LCD Panel 1 Year





8" Embedded Touch Monitor.

AIM-TM0Pxxxx080-R21