

24" inch Embedded Touch Monitor

Products application :

- POS Terminal
- Industrial PC
- Kiosk
- Gaming
- Medical apparatus
- Personal computer
- Mobile GPS
- Office automation
- Security system of the house
- Car-mounted amusement
- Military equipment
- Communicate



24" inch Embedded Touch Monitor

Display Specifications :

Active Area	531 × 298 mm
Pixel Pitch	0.27675 × 0.27675 mm
Brightness	250 cd/m ²
Contrast Ratio	1000 : 1
Resolution	1920 x 1080 (Full HD)
Viewing Angle	L/R 170° ; U/D 160°
Response Time	5 ms (Tr + Tf)
Display Colors	16.7M
Display Modes	640×480 ; 800×600 ; 1024×768 ; 1280×720 ; 1280×800 ; 1280×1024 ; 1366×768 ; 1440×900 ; 1680×1050 ; 1920×1080
Signal input	15 Pin D_Sub ; DVI ; Mini-Audio in
Mini-Audio out	1W (8Ω) × 2
OSD Keyboard (Two Options)	⊙ Menu/Select ⊙ - ⊙ + ⊙ Auto/Exit ⊙ Power
Power Source 、 Power Consumption	DC 12V ; ≤23w ; Standby ≤1w
Storage 、 Operation	-20~60℃ ; 0~50℃
VESA	75×75 ; 100×100 mm
Casing Colors	Black
Casing Size 、 Weight	558.5 × 325.7 × 50 mm ; 6.3 kg (W×H×D)
Carton 、 gross weight	700 × 400 × 180 mm ; 8.3 kg (W×H×D)



※Note 1:R01W (OSD Key at the bottom of the Monitor)



※Note 2:R03W (OSD Key on the back of the Monitor)



Touch Feature :

Input Method	Finger, gloved hand, or stylus activation
Activation Force	≥ 50g
Linearity	≤ 1.5%
Surface	≥ 3H
Life Time	≤ 35,000,000
Application	Writing and Signature Capture Capability
PC Link	USB or RS232

Software Feature :

Calibration	Fast full oriental 4 points position
Compensation	Edge compensation. Accuracy 25 points linearity compensation
Draw Test	Position and linearity verification
Controller	Support multiple controllers
Languages	English 、 Simple Chinese 、 Traditional Chinese 、 Japanese 、 French 、 German 、 Spanish 、 Korean 、 Arabic 、 Czech 、 Danish 、 Dutch 、 Greek 、 Hungarian 、 Italian 、 Norwegian 、 Russian 、 Polish 、 Portuguese 、 Slovenian 、 Swedish 、 Thai 、 Turkish
Mouse Emulator	Right / left button emulation. Auto Right / left Click (PDA function)
Touch Style	Drawing a Mode 、 button a Mode 、 Touch Off/ on Switch
Double Click	Configurable double click speed 、 Configurable double click area
Sound Modes	No sound 、 Touch down 、 Touch up
COM Port Support	COM1 ~ COM255 for Windows and Linux COM1 ~ COM8 for MS- DOS
Display Support	display rotation 、 Support multiple monitors
Support O.S	All Windows-32 bit O.S Windows7-8-10 ; XP-64 bit O.S MS-DOS ; All Linux ; MAC

Order information :

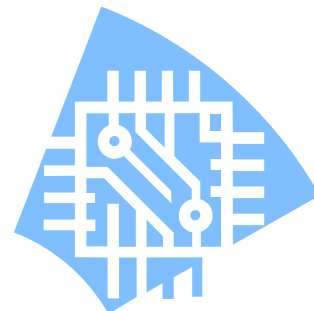
AIM-TMOP5R240-R01W :	【VGA/AUDIO/DVI/USB-TOUCH】	AIM-TMOP5R240-R02W :	【VGA/AUDIO/DVI/RS232-TOUCH】
AIM-TMOP5R240-R03W :	【VGA/AUDIO/DVI/USB-TOUCH】	AIM-TMOP5R240-R04W :	【VGA/AUDIO/DVI/RS232-TOUCH】
Accessory	VGA Cable / AC90~260V Adapter / Power Cable / Audio Cable / USB or RS232 Cable / Touch Pen / Cleaning wipes / Driver Disk ※DVI Cable(Optional)		



3 Year Warranty
LCD Panel 1 Year



Dimensions :



AIM-TM0P5R240-R01W (DIM)

